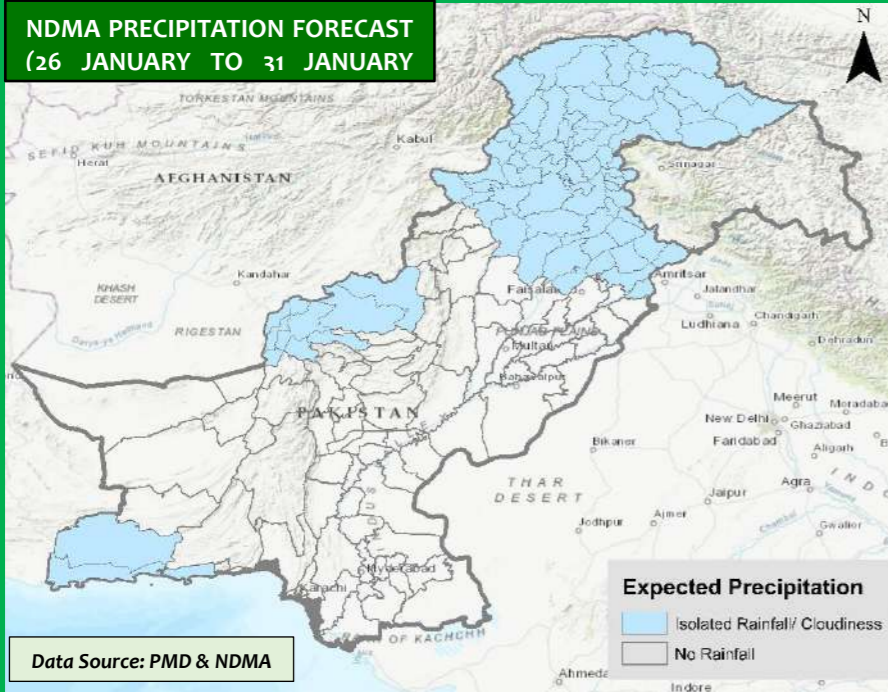




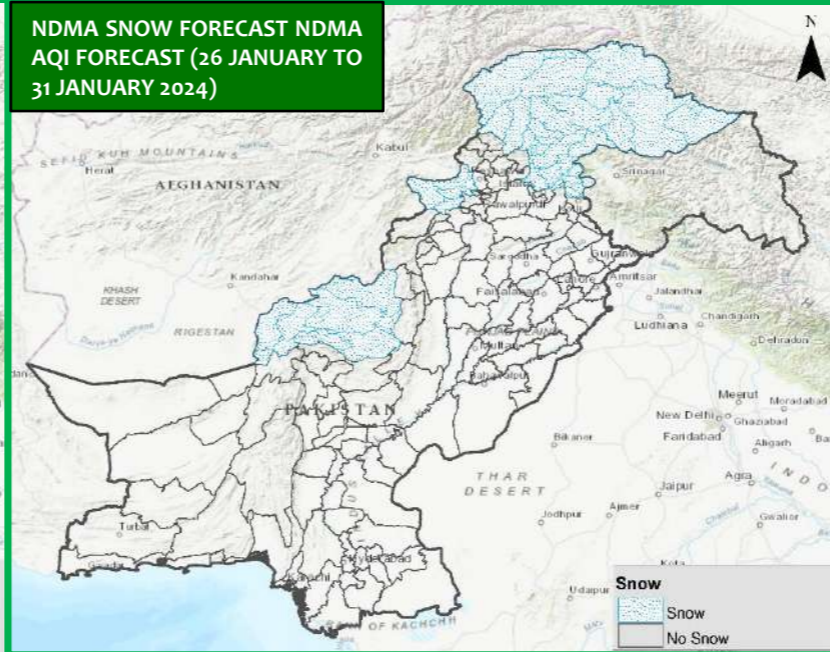
# NDMA EXECUTIVE UPDATE – WINTER HAZARDS (26 JANUARY 2024 TO 31 JANUARY 2024)



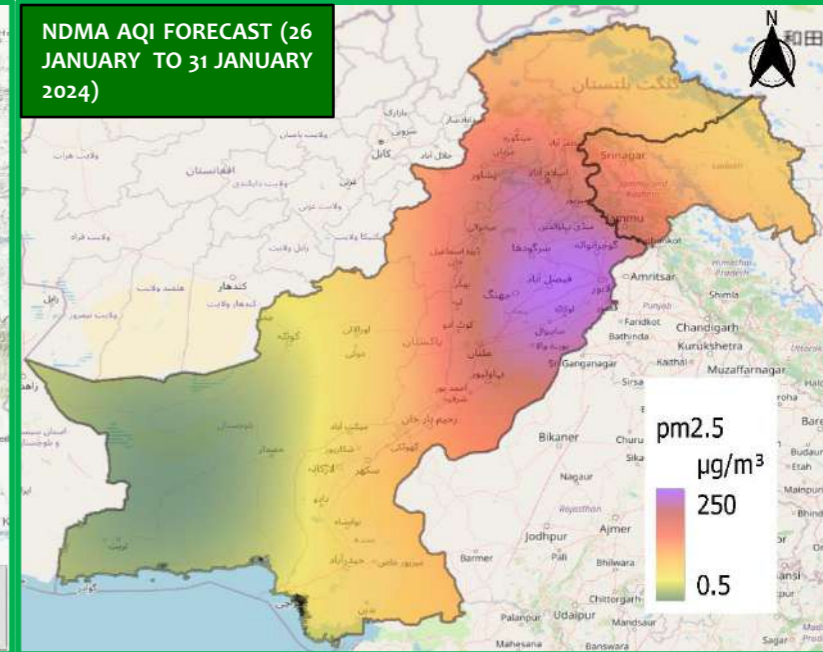
**NDMA PRECIPITATION FORECAST (26 JANUARY TO 31 JANUARY)**



**NDMA SNOW FORECAST NDMA AQI FORECAST (26 JANUARY TO 31 JANUARY 2024)**



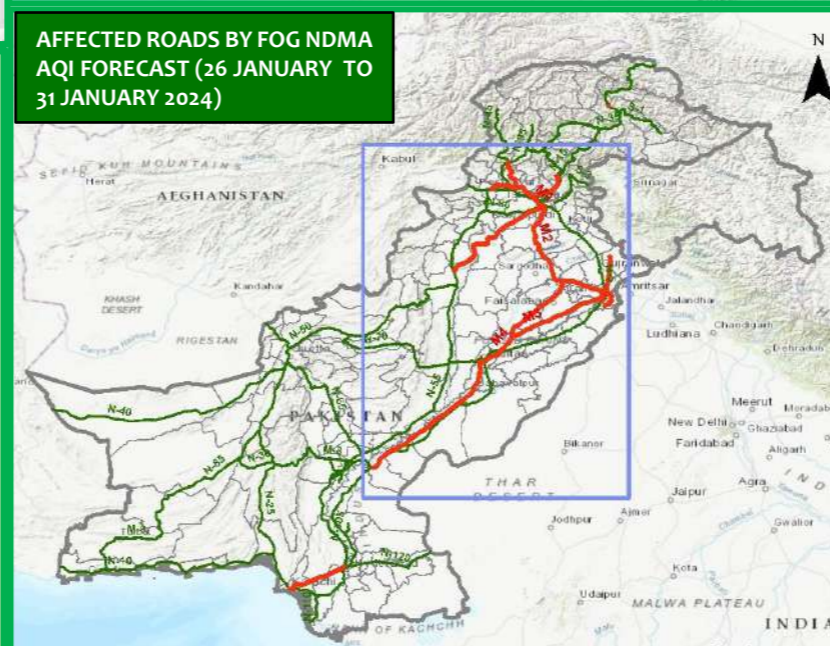
**NDMA AQI FORECAST (26 JANUARY TO 31 JANUARY 2024)**



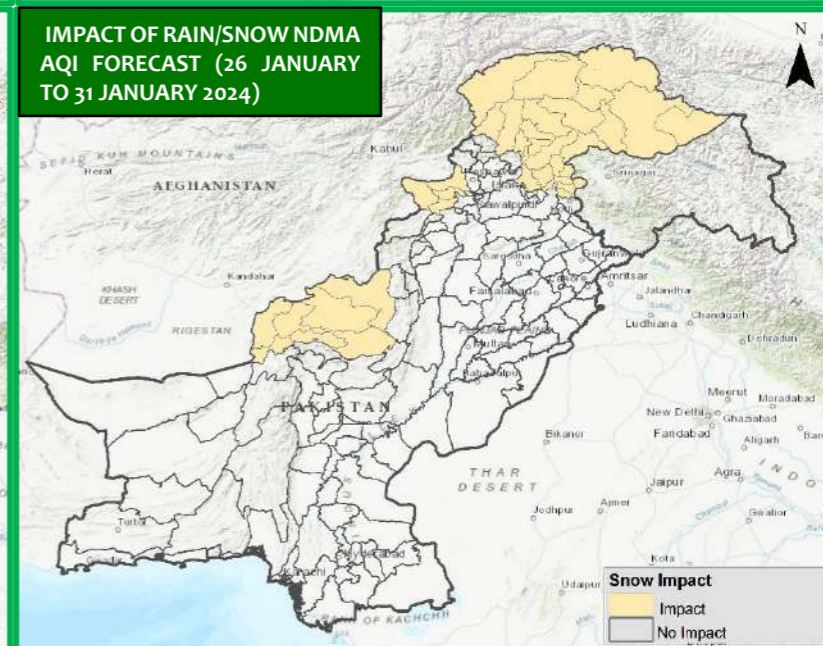
## TOP RAIN / SNOW RECORDED LAST 24 HOURS (MM)

- **Balochistan.** Yes
- **Khyber Pakhtunkhwa.** Yes
- **Punjab.** Nil
- **Sindh.** Nil
- **Gilgit-Baltistan.** Yes
- **State of AJ&K.** Yes
- **Islamabad Capital Territory.** Yes

**AFFECTED ROADS BY FOG NDMA AQI FORECAST (26 JANUARY TO 31 JANUARY 2024)**



**IMPACT OF RAIN/SNOW NDMA AQI FORECAST (26 JANUARY TO 31 JANUARY 2024)**



**FORECASTED IMPACTS**

- No **adverse weather systems** expected during this week (26 JANUARY 2024 TO 31 JANUARY 2024)

**WEATHER FOR COMING WEEK**

- **Balochistan.** Rain is expected in parts of Balochistan, along with snow in the high elevated areas of the province.
- **Khyber Pakhtunkhwa.** Cold temperature conditions, along with rain and snow in high-elevated areas of the province, are likely to persist. The fog situation is expected to subside due to the rain.
- **Punjab.** Rain will persist in various parts of the province, along with cold temperature conditions. The fog situation is expected to subside due to the rain.
- **Sindh.** Dry weather with cool nights and foggy / misty mornings are expected to prevail over the province.
- **Gilgit Baltistan.** Rain is expected in most parts of the province, along with snow in the high elevated areas.
- **State of AJ&K.** Cold weather with precipitation (showers / snow) is expected in most areas.
- **Islamabad Capital Territory.** Cold temperature conditions, accompanied by rain, is expected in the city.
- **GUIDANCE ISSUED**
- PDMA's to undertake regular public awareness on all media channels / social media to maximise general public's knowledge on risks associated with winter season; colder temperatures, freezing rain, snowfall, fog, smog, etc.
- NHA / FWO / Local C&W Depts to ensure pre-placement of machinery and timely clearance of snowfall from roads / highways.
- Rescue Services, Armed Forces and leading NGOs / CSOs to ensure availability of personnel / equipment in the indicated areas & be on stand-by for rapid response in case of any forecasted adverse weather systems.

WEATHER OUTLOOK – TOURIST LOCATIONS – NEXT 7 DAYS		
Locations	Isolated Thunderstorm/Rain / Snowfall	Temperature (°C)
Murree	Snow	-1 to 9
Galiyat	Snow	-2 to 7
Naran	Snow	-10 to 2
Kaghan	Snow	-8 to 4
Malamjabba	Snow	-1 to 9
Kalam	Snow	-2 to 12
Neelum	Snow	-1 to 7
Naltar	Snow	-9 to 1
Rattu	Snow	-5 to 1
Skardu	Snow	-10 to 1

LOW VISIBILITY ADVISORY
DRIVE CAUTIOUSLY ON ROADS (M1, M2, M3, M4, M5, M11 AND M14) AND LINK ROADS AFFECTED BY FOG. MAINTAIN A SAFE FOLLOWING DISTANCE AND REDUCE SPEED TO ADAPT TO LIMITED VISIBILITY.
AVOID HIGH BEAMS BECAUSE THEY CAN REFLECT OFF FOG PARTICLES, WORSENING VISIBILITY. STICK TO LOW BEAMS INSTEAD. USE FOG LIGHTS TO IMPROVE VISIBILITY CLOSE TO THE GROUND.
STAY TUNED TO WEATHER UPDATES AND BE AWARE OF ANY CHANGES IN VISIBILITY CONDITIONS DURING YOUR JOURNEY.

TOURIST ADVISORY
TOURISTS VISITING AREAS SUSCEPTIBLE TO SNOW ARE ADVISED TO REMAIN VIGILANT AS SNOW IS EXPECTED IN DIFFERENT PARTS OF THE COUNTRY.
TOURISTS VISITING AREAS OF GILGIT-BALTISTAN ARE HIGHLY ADVISED TO REMAIN ALERT, AS LIGHT TO MODERATE SNOW, IS EXPECTED IN THE COMING DAYS WHICH MAY CAUSE ROAD DISRUPTIONS.
PRECIPITATION IS EXPECTED IN THE COMING DAYS IN AJ&K, TOURISTS VISITING KASHMIR, ESPECIALLY NEELUM VALLEY, SHOULD BE PREPARED FOR ROAD CLOSURES AND CHILLY TEMPERATURES, PARTICULARLY DURING THE EVENINGS AND EARLY MORNINGS.